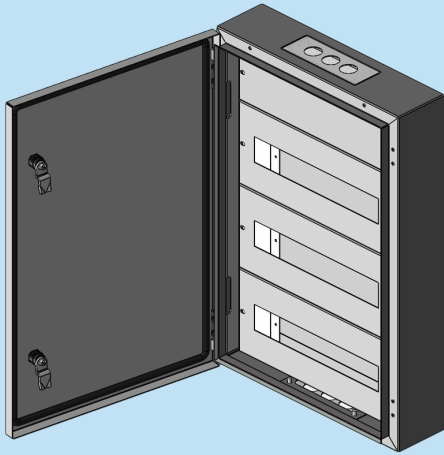


:: DISTRIBUTION BOARD - HEAVY DUTY SURFACE MOUNT - IP65



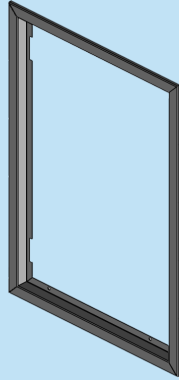
ORDER NO	TYPE	DESCRIPTION	DIMENSIONS (WxHxD)mm	THICKNESS	QTY
760 102	DBHD 1x8-SM	Distribution Board-Heavy Duty-Surface Mount Single Row 1x8 ways (each row)	300x250x125	1.0mm	01
760 103	DBHD 1x12-SM	Distribution Board-Heavy Duty-Surface Mount Single Row 1x12 ways (each row)	350x250x125	1.0mm	01
760 104	DBHD 1x15-SM	Distribution Board-Heavy Duty-Surface Mount Single Row 1x15 ways (each row)	400x250x125	1.0mm	01
760 106	DBHD 1x18-SM	Distribution Board-Heavy Duty-Surface Mount Single Row 1x18 ways (each row)	450x250x125	1.0mm	01
760 124	DBHD 2x15-SM	Distribution Board-Heavy Duty-Surface Mount Two Rows 2x15 ways (each row)	400x400x125	1.0mm	01
760 126	DBHD 2x18-SM	Distribution Board-Heavy Duty-Surface Mount Two Rows 2x18 ways (each row)	450x400x125	1.0mm	01
760 144	DBHD 3x15-SM	Distribution Board-Heavy Duty-Surface Mount Three Rows 3x15 ways (each row)	400x600x125	1.2mm	01
760 146	DBHD 3x18-SM	Distribution Board-Heavy Duty-Surface Mount Three Rows 3x18 ways (each row)	450x600x125	1.2mm	01
760 164	DBHD 4x15-SM	Distribution Board-Heavy Duty-Surface Mount Four Rows 4x15 ways (each row)	400x750x125	1.2mm	01
760 166	DBHD 4x18-SM	Distribution Board-Heavy Duty-Surface Mount Four Rows 4x15 ways (each row)	450x750x125	1.2mm	01
760 180	MDBHD 2x15-SM	MCCB Distribution Board-Heavy Duty-Surface Mount MCCB+2 Rows MCCB+2x15 ways (each rows)	400x750x150	1.2mm	01
760 182	MDBHD 2x18-SM	MCCB Distribution Board-Heavy Duty-Surface Mount MCCB+2 Rows MCCB+2x18 ways (each rows)	450x750x150	1.2mm	01
760 184	MDBHD 3x15-SM	MCCB Distribution Board-Heavy Duty-Surface Mount MCCB+3 Rows MCCB+3x15 ways (each rows)	400x900x150	1.2mm	01
760 186	MDBHD 3x18-SM	MCCB Distribution Board-Heavy Duty-Surface Mount MCCB+3 Rows MCCB+3x18 ways (each rows)	450x900x150	1.2mm	01
760 188	MDBHD 4x15-SM	MCCB Distribution Board-Heavy Duty-Surface Mount MCCB+4 Rows MCCB+4x15 ways (each rows)	400x1050x150	1.2mm	01
760 190	MDBHD 4x18-SM	MCCB Distribution Board-Heavy Duty-Surface Mount MCCB+4 Rows MCCB+4x18 ways (each rows)	450x1050x150	1.2mm	01

Heavy Duty Distribution Board consists of Cabin, Gland Plate/s with PU gasket/s, & Steel Door with PU gasket.
MCCB Module Mounting Plate can be adjustable in depth direction to accommodate different brands of MCCBs. Front Plate is Blank Front Plate.
DIN Module consists of DIN rail and Front Plate with cutout for DIN equipment.
Neutral & Earth links are supplied.

Heavy Duty Distribution Board are supplied with steel front door as standard, glass front door is available on request.
Door lock is quarter turn lock with common key. Other lock options are available on request.

Heavy Duty Distribution Board is surface mounting type and can be converted to Flush Mounting type by fixing Flush Mount Frame.
Flush Mounting Frame is supplied as a removable separate item for easy transportation and stocking.

:: FLUSH MOUNT FRAME



ORDER NO	TYPE	DESCRIPTION	DIMENSIONS (WxH)mm	THICKNESS	QTY
724 534	FF DBHD 1x8	Flush Mount Frame - HD Single Row 1x8 ways (each row)	300x250	1.2mm	01
724 539	FF DBHD 1x12	Flush Mount Frame - HD Single Row 1x12 ways (each row)	350x250	1.2mm	01
724 540	FF DBHD 1x15	Flush Mount Frame - HD Single Row 1x15 ways (each row)	400x250	1.2mm	01
724 585	FF DBHD 1x18	Flush Mount Frame - HD Single Row 1x18 ways (each row)	450x250	1.2mm	01
724 544	FF DBHD 2x15	Flush Mount Frame - HD Two Rows 2x15 ways (each row)	400x400	1.2mm	01
724 586	FF DBHD 2x18	Flush Mount Frame - HD Two Rows 2x18 ways (each row)	450x400	1.2mm	01
724 548	FF DBHD 3x15	Flush Mount Frame - HD Three Rows 3x15 ways (each row)	400x600	1.2mm	01
724 587	FF DBHD 3x18	Flush Mount Frame - HD Three Rows 3x18 ways (each row)	450x600	1.2mm	01
724 549	FF MDBHD 4x15	Flush Mount Frame - HD Four Rows 4x15 ways (each row)	400x750	1.2mm	01
724 588	FF DBHD 4x18	Flush Mount Frame - HD Four Rows 4x18 ways (each row)	450x750	1.2mm	01
724 549	FF MDBHD 2x15	Flush Mount Frame - HD MCCB + 2 Rows MCCB + 2x15 ways (each row)	400x750	1.2mm	01
724 588	FF MDBHD 2x18	Flush Mount Frame - HD MCCB + 2 Rows MCCB + 2x18 ways (each row)	450x750	1.2mm	01
724 551	FF MDBHD 3x15	Flush Mount Frame - HD MCCB + 3 Rows MCCB + 3x15 ways (each row)	400x900	1.2mm	01
724 589	FF MDBHD 3x18	Flush Mount Frame - HD MCCB + 3 Rows MCCB + 3x18 ways (each row)	450x900	1.2mm	01
724 553	FF MDBHD 4x15	Flush Mount Frame - HD MCCB + 4 Rows MCCB + 4x15 ways (each row)	400x1050	1.2mm	01
724 591	FF MDBHD 4x18	Flush Mount Frame - HD MCCB + 4 Rows MCCB + 4x18 ways (each row)	450x1050	1.2mm	01